

# **THESIS MANUAL BOOK**



## **“DEVELOPMENT OF ABDULLAH PERMATA JINGGA MOSQUE WEBSITE INTERFACE WITH USER CENTERED DESIGN METHOD”**

By:  
Salsabila Firdausy  
1841720036

**INFORMATICS ENGINEERING STUDY PROGRAM  
DEPARTMENT OF INFORMATION TECHNOLOGY  
POLITEKNIK NEGERI MALANG  
2022**

## TABLE OF CONTENT

<b>TABLE OF CONTENT .....</b>	<b>ii</b>
<b>LIST OF FIGURES.....</b>	<b>iv</b>
<b>BAB I INTRODUCTION .....</b>	<b>1</b>
1.1 General Introduction of The System.....	1
1.2 System Description .....	1
1.3 User Flow.....	2
<b>BAB II SYSTEM OPERATION INTRODUCTION .....</b>	<b>4</b>
2.1 Homepage .....	4
2.2 Profile Page.....	5
2.3 Activity Page.....	6
2.4 Kajian Page .....	8
2.5 Gallery Page.....	9
2.6 Finance Page .....	9
2.7 Facilities Page .....	10
2.8 Contact Us Page.....	11
2.9 Admin Login Page .....	12
2.10 Dashboard Admin Page .....	12
2.11 History Admin Page.....	13
2.12 Activities Admin Page .....	14
2.13 Kajian Admin Page .....	15
2.14 Gallery Admin Page.....	17

2.15	Finance Admin Page .....	18
2.16	Message Admin Page.....	19

## LIST OF FIGURES

Figure 2. 1 Homepage and Detail Nearest Agenda Page .....	4
Figure 2. 2 History and MTK Page .....	5
Figure 2. 3 Organization Structure Page .....	6
Figure 2. 4 Activity and Detail Activity Page .....	7
Figure 2. 5 Big Day and TPQ Page .....	7
Figure 2. 6 Kajian and Kajian Detail Page .....	8
Figure 2. 7 Gallery and Detail Gallery Page .....	9
Figure 2. 8 Finance and Detail Finance Page .....	10
Figure 2. 9 Facilities Page .....	10
Figure 2. 10 Contact Us Page .....	11
Figure 2. 11 Admin Login Page .....	12
Figure 2. 12 Dashboard Admin Page.....	12
Figure 2. 13 History Admin Page.....	13
Figure 2. 14 Activities Admin Page .....	14
Figure 2. 15 Kajian Admin and Managing Kajian Insidentil Page .....	15
Figure 2. 16 Managing Kajian Archive Page and Content of Managing Kajian Archive Page .....	16
Figure 2. 17 Gallery Admin Page.....	17
Figure 2. 18 Finance Admin Page .....	18
Figure 2. 19 Message Admin Page.....	19

## **BAB I INTRODUCTION**

### **1.1 General Introduction of The System**

Abdullah Permata Jingga Mosque is one of the mosques located in Housing Area Permata Jingga in Malang City. Abdullah Permata Jingga Mosque actively participates in spreading Islam for the community around the mosque. Based on discussions with the Mosque Development Council / Dewan Kemakmuran Masjid (DKM) of Abdullah Permata Jingga Mosque, it was obtained that the profile website is still in the early stages of development. Where also based of DKM and its users stated that the available menu features can be categorized as less than optimal. There is another problem expressed by DKM, namely that they feel difficulty in accessing and managing the admin page on the existing website. Where the current website is built using wordpress. So that admin performance is hampered in managing the existing website, because it is unfamiliar with the elements on the website.

The writer has been given an opportunity to be a partner in the website development project of Abdullah Permata Jingga Mosque's website. Based on that problem, the writer cooperates with the partner form Abdullah Permata Jingga Mosque to analyze and refine the User Interface (UI) of Abdullah Permata Jingga Mosque's website. This will be done with the intention of getting the design solution in accordance to what expected by the Mosque's Prosperity Council (DKM) of Abdullah Permata Jingga and the people that frequents the mosque. With the suitable UI design, it is expected to be able to satisfy the needs of the user in using the system.

### **1.2 System Description**

To support that the introduction described earlier to run well, hardware and software are needed that can support system performance are follows:

- Software Needs.

All types of software or tools used to assist with this development process are as follows:

- Microsoft Office, as a tool for writing proposals and reports.
- Figma Design, as a tool to design user interface.

- Windows 10 Home Single Language 64-bit as an operating system.
- VS Code, as a code editor to develop the implementation
- Library Typescript ReactJs, as a library for the application of UI s in the frontend development
- Hardware Needs

The hardware involved during the system development process is as follows:

- Laptop with processor specifications Intel(R) Core(TM) i3-10110U CPU @ 2.10GHz, RAM 8Gb
- Mouse and Keyboard

### 1.3 User Flow

User Flow is the steps performed by the user when using the system in order to achieve the goal and the interaction with the system. The user flow is as follows:

- User’s user flow

User Flow is the flow of user interaction along with the structure of the content on the Abdullah Permata Jingga Mosque website. The user flow and structure can be seen in the Figure 4.11.

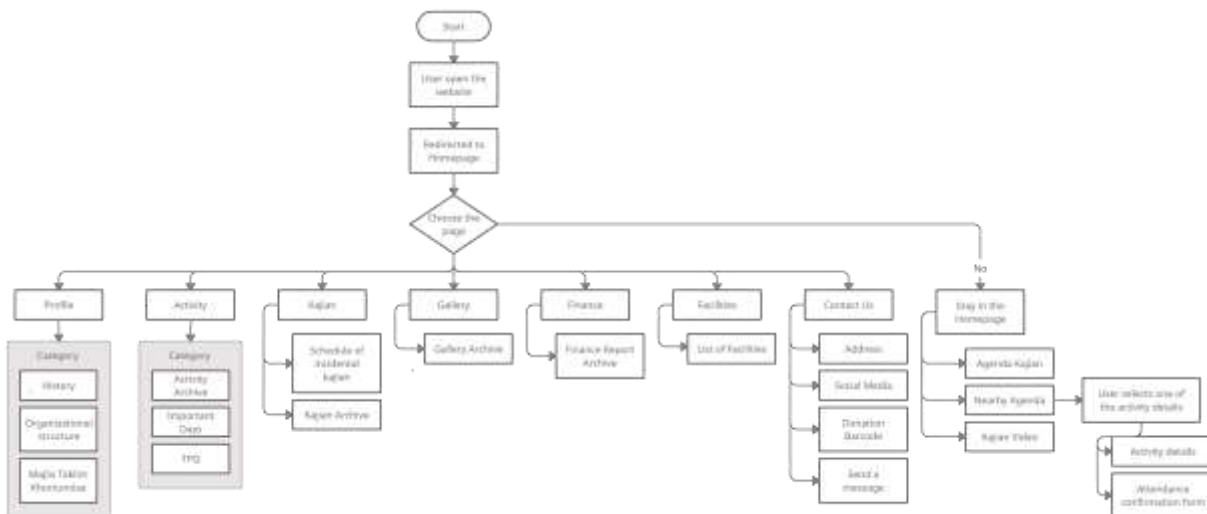


Figure 4. 1 User’s User Flow

- Admin's user flow

User Flow is the flow of admin interaction along with the content structure on the Abdullah Permata Jingga Mosque website. The user flow and structure can be seen in the Figure 4.12



Figure 4. 2 Admin User Flow

## BAB II SYSTEM OPERATION INTRODUCTION

### 2.1 Homepage

The homepage is the first page that is displayed when users open the Abdullah Permata Jingga Mosque website. On this page, users will be greeted with a brief explanation of the Abdullah Mosque and also various information that shown. The information in question includes a prayer time schedule, a Kajian Agenda that displays the pictures along with an explanation of the type of Kajian, the Nearest Agenda and also the Kajian Video. User can choose the nearest agenda by click “Detail” button, and it will direct to the detail nearest agenda page. In those page, user can fill the confirmation attendance on the selected agenda. The homepage and detail nearest agenda page ptototype can be seen on the Figure 2.1.

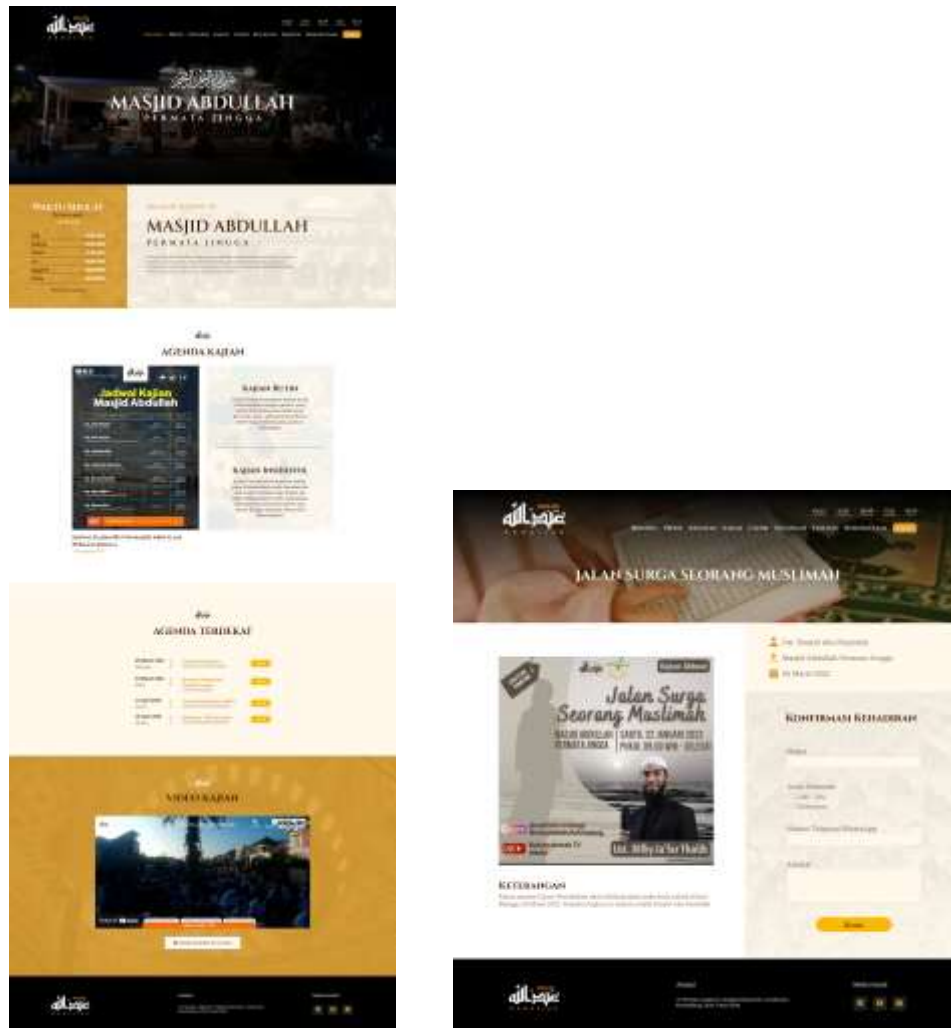


Figure 2. 1 Homepage and Detail Nearest Agenda Page



## 2.2 Profile Page

The profile menu consists of several sub menu pages that provide users with information about the Abdullah Mosque itself and also the organizations in it. The sub menu page in question is the History Page which contains the history of the establishment of the mosque that can be seen on the Figure 2.2. In the history page, users are presented with information on the history of the mosque which is complete with year data, photos and historical descriptions.

Then the next sub menu is the Organizational Structure Page, where there are two organizations engaged in the Abdullah Mosque, namely DKM and MTK that can be seen on the Figure 2.2. The information in organizational structure page provided is in the form of chart images from each organization, so that users can understand more about their parts and the person in charge

As well as the sub menu on the last profile is the Majelis Taklim Khoirunnisa page that can be seen on the Figure 2.3, which contains information on the vision, mission, rights and obligations of members and activities carried out by MTK.

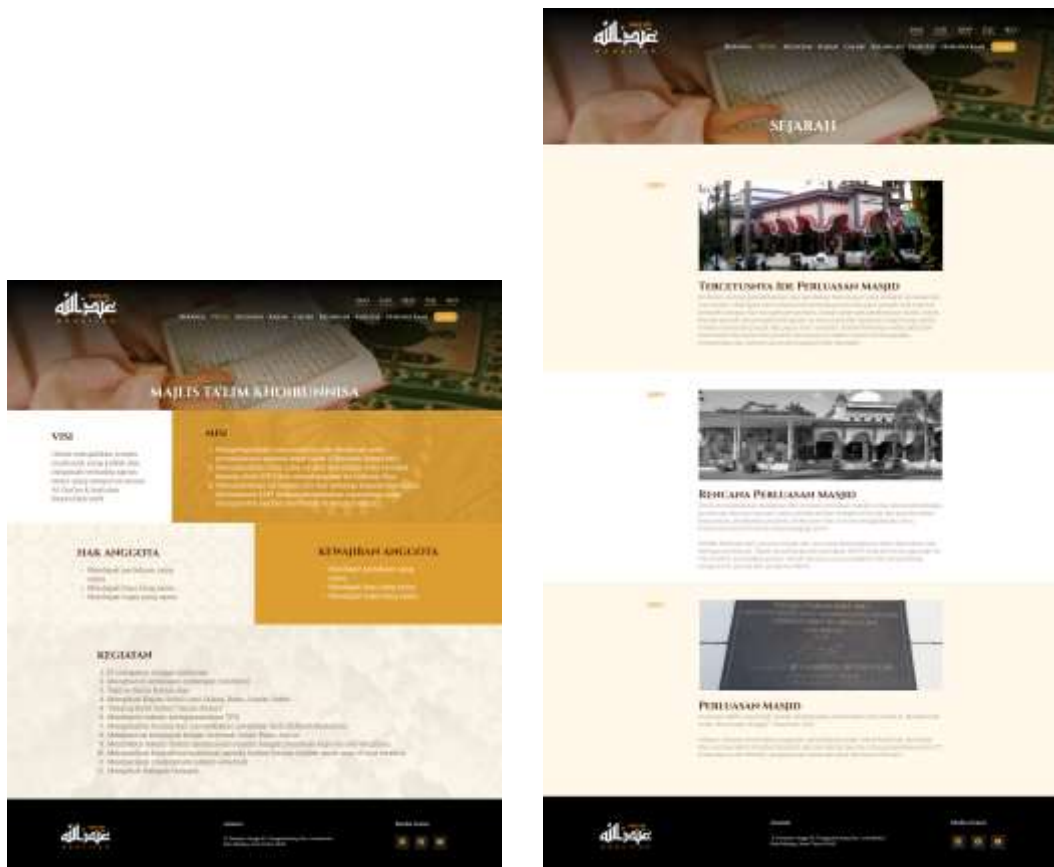


Figure 2. 2 History and MTK Page



carried out in the month of Ramadhan & Eid al-Fitr, and also on Eid al-Adha, that can be seen on the Figure 2.5. Also for the last sub menu is TPQ that consist information about TPQ including class, teacher and agenda that can be seen on the Figure 2.5..



Figure 2. 4 Activity and Detail Activity Page



Figure 2. 5 Big Day and TPQ Page

## 2.4 Kajian Page

The Kajian Page is intended for users who want to know information about the kajian carried out by the Abdullah Mosque. Users can see a list of incidental kajian to be conducted this year at the top of the page that shown by a line that act as a timeline. Followed by the display of archived articles of kajian that have been carried out by the Abdullah Mosque and published by the admin. User can see the detail of each archive kajian that equipped with information such as picture, speaker, date and place of kajian. of kajian and detail kajian page can be seen on the Figure 2.6

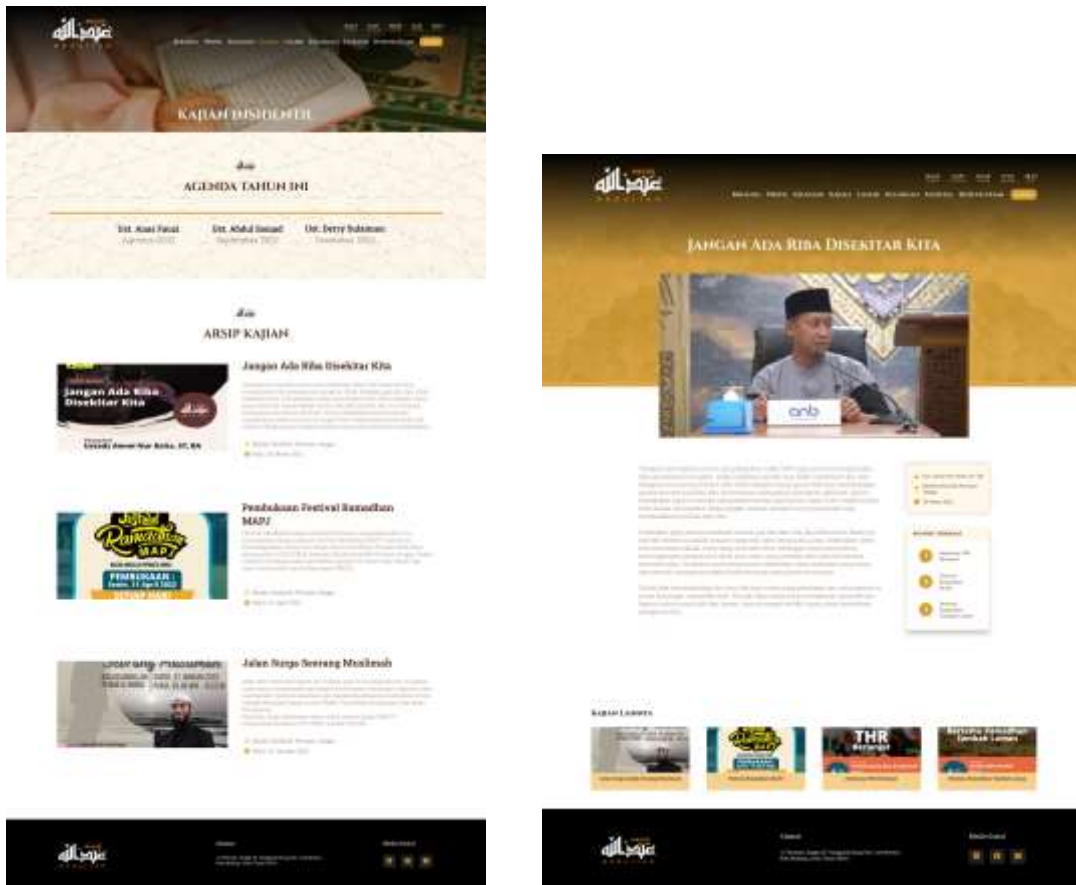


Figure 2. 6 Kajian and Kajian Detail Page

## 2.5 Gallery Page

On the gallery page, users can see the gallery archives presented and immortalized by the abdullah mosque admin. This gallery archive is equipped with a title along with a description, and variation of picture that user can see. Gallery and detail gallery page can be seen on Figure 2.7.

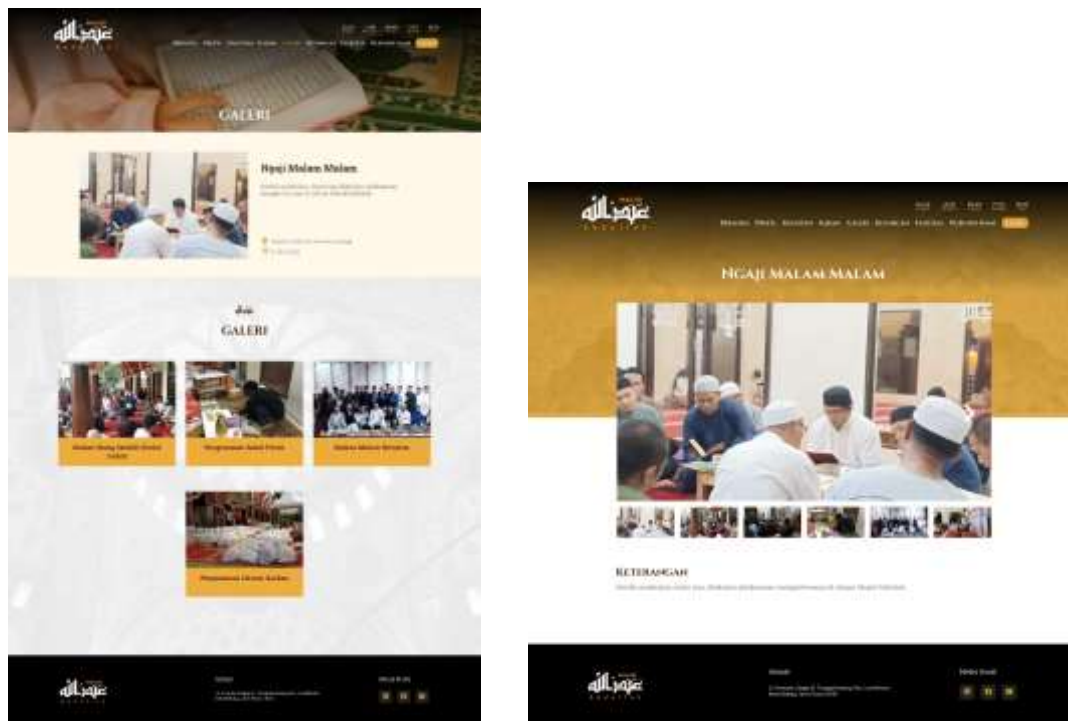


Figure 2. 7 Gallery and Detail Gallery Page

## 2.6 Finance Page

The Finance Menu is a forum for The Abdullah Mosque to communicate in reporting finances to users. Users can access the financial archive in summary in the form of a list on the left side of the page. While on the right, users are presented with the entire financial archive in the form of on a card equipped with a detail button to be directed to the Financial Details Page. The Finance and detail finance page can be seen on the Figure 2.8.



Figure 2. 8 Finance and Detail Finance Page

## 2.7 Facilities Page

The Facilities page displays a list of facilities available at the Abdullah Mosque in the form of a card. Users are presented with images, as well as descriptions in each existing facility. User can zoom the picture by double click on the picture, so they can see it more clearly. of facilities page can be seen on the Figure 2.9.



Figure 2. 9 Facilities Page

## 2.8 Contact Us Page

On this page, there is some information available such as the address of the Abdullah Mosque on the left top of the page, Social Media owned by the Abdullah Mosque on the right side of the page, a QR Code used as a donation container, maps of the Abdullah Mosque and also a Send Message form. Users can send messages to the Abdullah Mosque through the Send Message form located at the bottom of the page. of contact us page can be seen on the Figure 2.10 below.



Figure 2. 10 Contact Us Page

## 2.9 Admin Login Page

This login page is intended only for the admin of the Abdullah Mosque. Before entering the admin page, admins are required to pass the login display to enter a username and password. The wireframe can be seen in Figure 2.11.



Figure 2. 11 Admin Login Page

## 2.10 Dashboard Admin Page

On this Admin Dashboard page, admins can see the nearest agenda table. The nearest agenda data can be added on Kajian Page that can be seen on Figure 2.16. Nearest agenda table data consist of includes names, descriptions, images, sources, dates and places of agenda. Admin can manage the data using button action detail, edit and delete. Dashboard admin page wireframe can be seen on the Figure 2.12



Figure 2. 12 Dashboard Admin Page



## 2.11 History Admin Page

This History Admin Page is intended for admins to manage history tables by adding, viewing data details, editing data and deleting history. Historical table data include titles, descriptions, years and historical images. Admin can manage the data using button action detail, edit and delete. History admin page can be seen on the Figure 2.13.

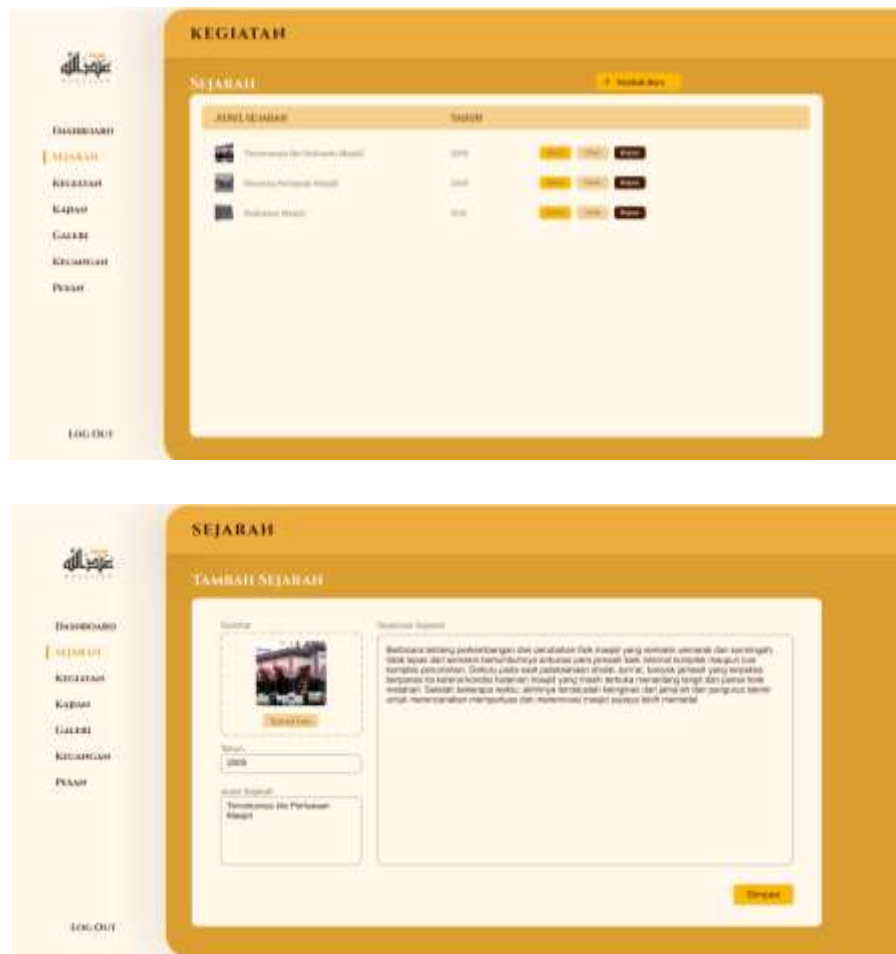


Figure 2. 13 History Admin Page

## 2.12 Activities Admin Page

Through this Admin Activities page, admins can manage an activity archive table that has data including names, descriptions, dates, places and images of activities. Admin can manage the data using button action detail, edit and delete. Activities Admin Page can be seen on the Figure 2.14.

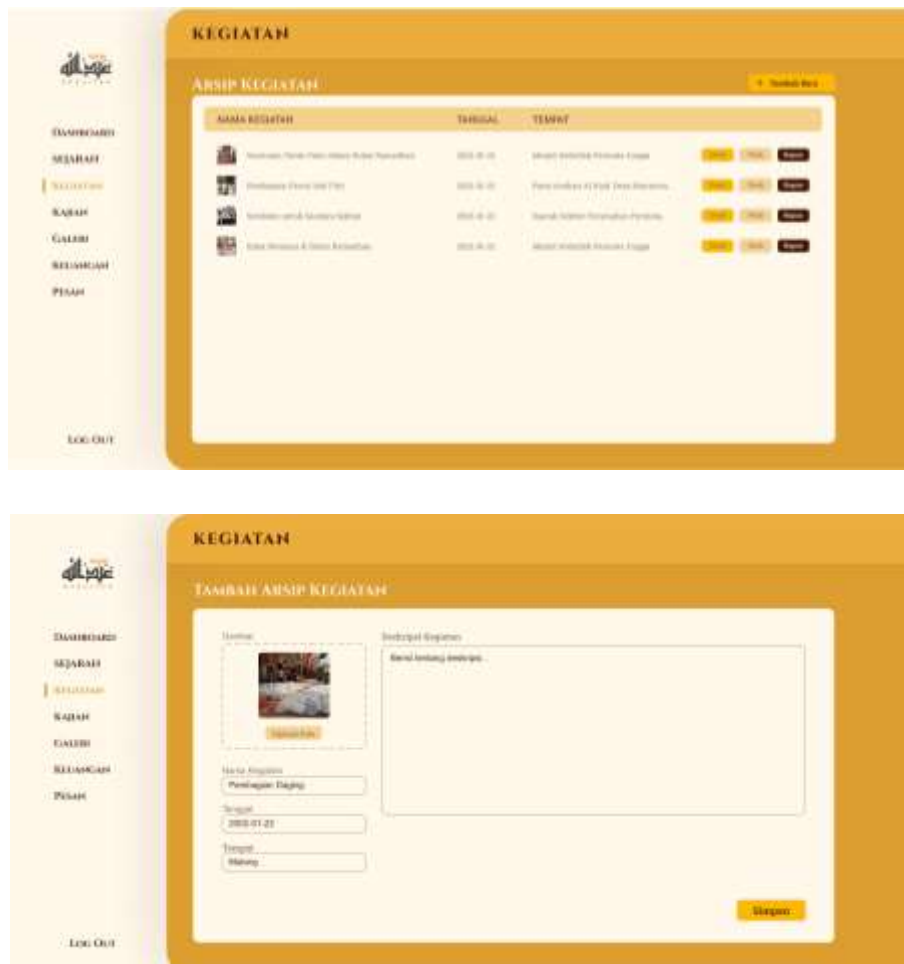


Figure 2. 14 Activities Admin Page

### 2.13 Kajian Admin Page

On this Admin Kajian Page, admins are given access to manage the table of nearest incidental kajian agenda plans closest to the table data, namely the source, date and place of the kajian incidental kajian. In addition, admins can also manage kajian archive tables that have data including names, descriptions, images, dates, places of kajian agenda. Admin can manage the data using button action detail, edit and delete.

In order to manage kajian table, admin need to choose on each agenda whether it chosen as archive or not. If admin choose yes the data as archive, so the data will recognize as an kajian archive. In the other hand, if admin choose as a not archive, the data will recognize as a nearest agenda. Admin also can see list of attendace of each kajian on the managing page. Wireframe kajian admin can be seen on Figure 2.15 and Figure 2.16.



Figure 2. 15 Kajian Admin and Managing Kajian Insidentil Page

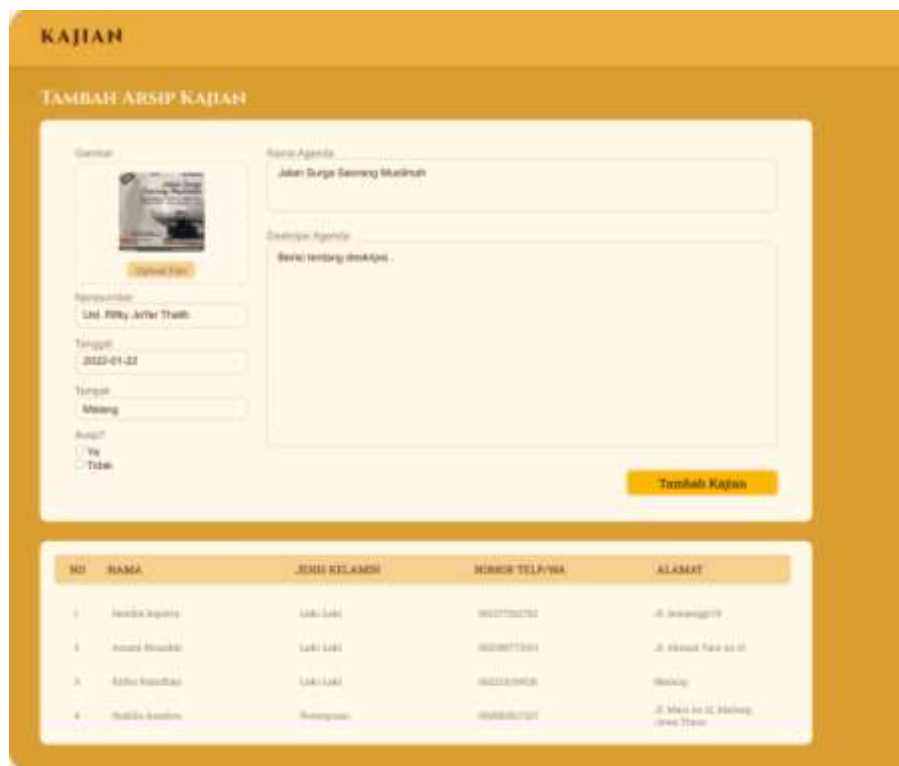


Figure 2. 16 Managing Kajian Archive Page and Content of Managing Kajian Archive Page

## 2.14 Gallery Admin Page

Admins can manage the gallery archive table on the Admin Gallery Page. Where the gallery table data that can be managed by the admin includes title, date, place, caption and image list. Admin can manage the data using button action detail, edit and delete. Admin also can upload more than 1 picture on each gallery. Gallery admin page can be seen on the Figure 2.17.

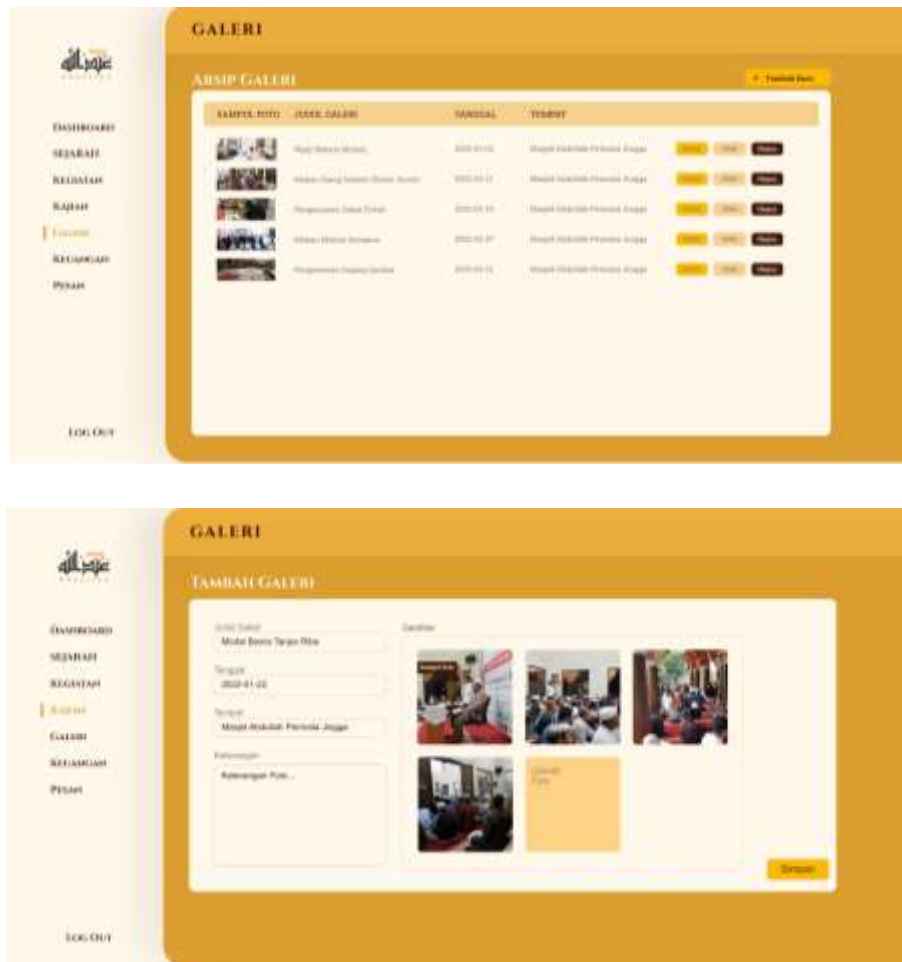


Figure 2. 17 Gallery Admin Page

## 2.15 Finance Admin Page

The Admin Finance Page presents the admins of the financial statements table. Admins can manage financial statement table data consisting of several data, including images, months, th-week, dates and records. Admin can manage the data using button action detail, edit and delete. The of finance admin page can be seen on the Figure 2.18.

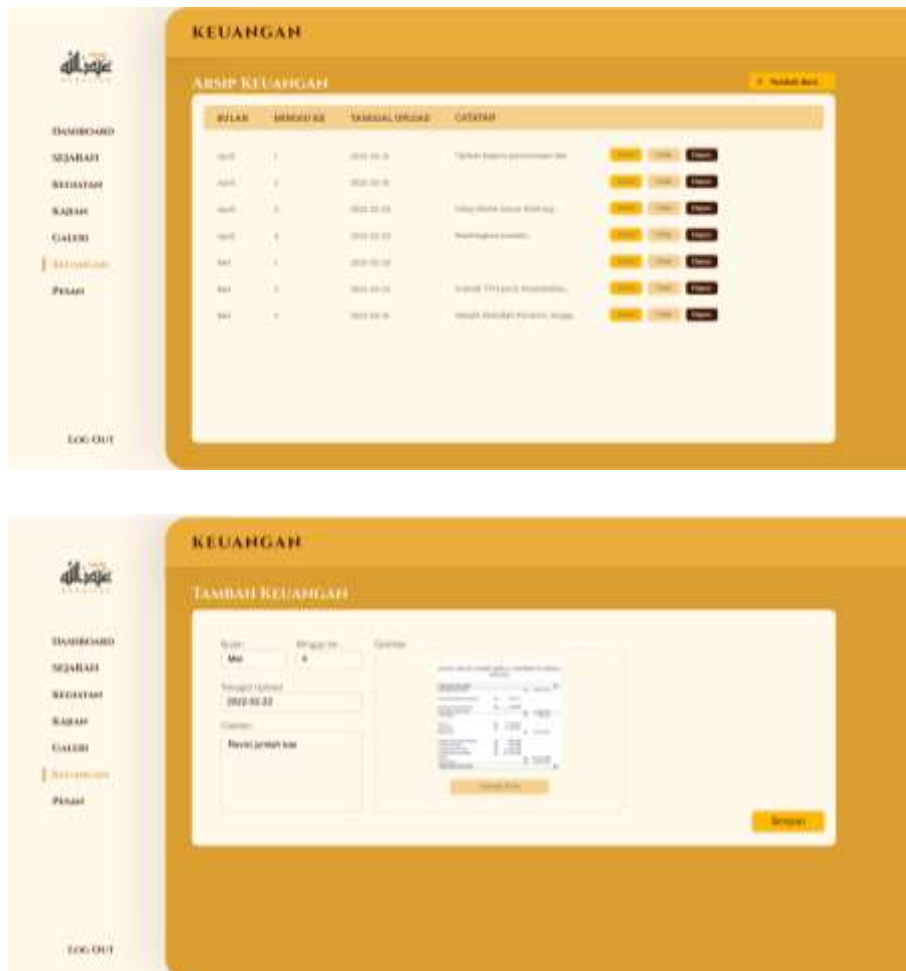


Figure 2. 18 Finance Admin Page

## 2.16 Message Admin Page

Admins can view a message table containing all messages that have been sent by a user on the admin messages page. In addition to being able to see message data in detail, admins can also delete messages in the message table. The message table data listed include the sender's name, email, subject and message. Message admin page prototype can be seen on the Figure 2.19 below.



Figure 2. 19 Message Admin Page